



BRIDGE MATE™ BY MARINE TECHNOLOGIES



## BRIDGE MATE ECDIS

### ELECTRONIC CHART DISPLAY & INFORMATION SYSTEM

## 来自MT的电子海图显示和信息系統

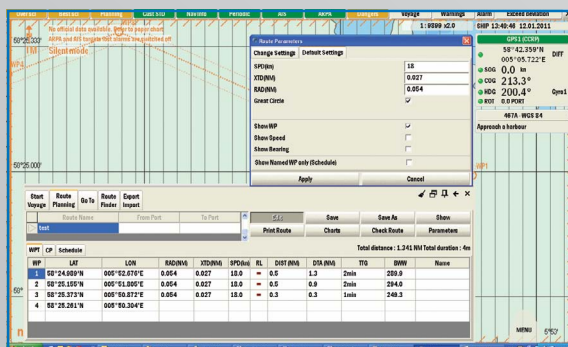
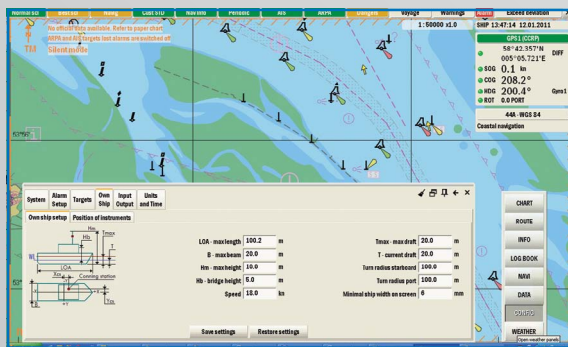
Marine Technologies, LLC (MT) is a U.S.-based company established in 2002 with the mission of providing superior vessel control solutions to the international offshore and commercial shipping industries. The company is strategically headquartered in Mandeville, Louisiana, at the heart of the Gulf deepwater operations. International offices in Norway, Brazil and Singapore serve the needs of a growing customer base worldwide.

MT公司始创于2002年，我们的使命是为全球海工和航运市场提供先进的船舶控制解决方案。MT公司总部位于美国路易斯安那州曼德维尔市，滨临墨西哥湾这一全美最大的深海业务市场。目前MT已在挪威、巴西和新加坡等地设立办事处，以满足全球不断增长的市场需求。

MT Bridge Mate™ Electronic Chart Display and Information System (ECDIS) is an integrated information system that displays a vast array of navigation information utilizing electronic charts. Designed with the vessel operator in mind, the Bridge Mate ECDIS is a vital resource for efficient route planning and monitoring.

源自MT的 Bridge Mate 电子海图显示和信息系統以电子海图为基本显示平台，可以综合显示全方位的导航信息。系统的人性化设计使驾驶员可以有效地进行航线规划和监控。

Incorporating user-friendly route planning functions, the Bridge Mate ECDIS provides precise vessel position data, optimizing navigation, safety and fuel consumption.



结合友好的用户界面，Bridge Mate ECDIS既提供易于操作的航线规划功能，又整合了精确的定位数据和导航数据，并充分考虑了航行的安全性和对燃料的节省。

Designed for the rugged offshore environment, the compact Bridge Mate ECDIS system promotes intuitive operation with state-of-the-art touchscreen marine monitors. The ECDIS is easy to install and service with a modular design that can be delivered as a stand-alone version or as part of the MT Bridge Mate Integrated Bridge System.

Bridge Mate ECDIS在设计上充分考虑了海上使用的恶劣环境，因此采用了触摸屏显示器，让操作更直观；整个系统采用模块化的设计，更便于安装和维护。另外整套ECDIS既可单独使用，也可作为Bridge Mate综合桥楼系统的一部分。

The Bridge Mate ECDIS complies with IMO (International Maritime Organization) regulations and is Wheel Mark approved, making it suitable for both new build and retrofit installations.

Bridge Mate ECDIS符合IMO规范要求，并且通过了Wheel Mark认证，适用于所有新造船和改装船。

The Bridge Mate ECDIS uses official vector charts and accepts CM-93 vector charts from C-Map, as well as ARCS from the United Kingdom Hydrographic Office.

Bridge Mate ECDIS 兼容多种官方矢量海图，以及C-Map出品的CM-93矢量海图和英国Hydrographic出品的 ARCS矢量海图。



MT Bridge Mate ECDIS is Wheel Mark Approved

FOR SHIP OWNERS CONCERNED WITH QUALITY AND SAFETY



## BRIDGE MATE ECDIS FEATURES

- Real-time positioning and route monitoring
- Advanced route planning and validation function
- Simple, low cost update and maintenance of charts via e-mail, DVD or C-Map online update service
- Interfaces to a large variety of navigation sensors
- Compact and modular design of hardware options enabling ease and flexibility of installation on new build vessels and retrofits
- Maintenance-free marine computer
- Touchscreen display available in 19", 23.1" or custom sizes
- Compatible with:
  - S-57 Edition 3 electronic navigational charts (ENCs) encrypted using the S-63 Data Protection Scheme from PRIMAR®
  - CM-93/3 and CM-93/2 vector charts from C-Map
  - Raster Navigational Charts (RNCs) from the Admiralty Raster Chart Service (ARCS) and Seafarer RNC (published by the Australian Hydrographic Service)
- Radar overlay from MT radar system or via a radar interface card
- Displays targets and information from AIS (Automatic Identification System)
- Intuitive menu structure for easy operation with built-in user manual and online help

## BRIDGE MATE ECDIS OPTIONS

- NAVTEX interface
- Optical bearing observations
- Pirate warning system
- Integrated weather forecast information
- Seetrac Tender Tracking System (TTS) interface
- Interface with MT heading control system for track control steering

## BRIDGE MATE ECDIS STANDARDS

The equipment conforms to the following standards:

- IEC 60945 Ed. 3.0, Maritime Navigation and Radiocommunication Equipment and Systems, General Requirements
- IEC 61174 Ed. 3.0, ECDIS Operational and Performance Requirements
- IMO Resolution A.817 (19), Performance Standard for Electronic Chart Display and Information Systems
- NMEA 0183 version 2.30, Standard for Interfacing Marine Electronic Devices
- IEC 61162 Ed. 2.0, Maritime Navigation and Radiocommunication Equipment and Systems, Digital Interfaces
- AIS interface is compatible with ITU-R M.1371 and IEC 61993-2

## MANDATORY ECDIS – IMO COMPLIANCE DATES FOR USE OF ENCS

### ECDIS强制要求时间表 – IMO对于用户启用电子海图 (ENCs) 的时间限定

SHIP TYPE 船型	SIZE 吨位	NEW BUILD 新造船	EXISTING VESSEL 在航船
Passenger Ships 客轮	≥ 500 gross tons ≥ 500 GRT	1 July 2012 2012年7月1日	No later than first survey after 1 July 2014 不晚于2014年7月1日后的第一次检验
Tankers 油船和化学品船	≥ 3,000 gross tons ≥ 3,000 GRT	1 July 2012 2012年7月1日	No later than first survey after 1 July 2015 不晚于2015年7月1日后的第一次检验
Dry Cargo Ships 干货船	≥ 50,000 gross tons ≥ 50,000 GRT	1 July 2013 2013年7月1日	No later than first survey after 1 July 2016 不晚于2016年7月1日后的第一次检验
	≥ 20,000 gross tons (new build) ≥ 20,000 GRT (新造船)	1 July 2013 2013年7月1日	No later than first survey after 1 July 2017 不晚于2017年7月1日后的第一次检验
	20-50,000 gross tons (existing vessel) 20-50,000 GRT (在航船)		
	≥ 10,000 gross tons (new build) ≥ 10,000 GRT (新造船)	1 July 2013 2013年7月1日	No later than first survey after 1 July 2018 不晚于2018年7月1日后的第一次检验
10-20,000 gross tons (existing vessel) 10-20,000 GRT (在航船)			
	3-10,000 gross tons 3-10,000 GRT	1 July 2014 2014年7月1日	No retrofit requirements for existing vessels < 10,000 gross tons 小于10,000 GRT的在航船不做改装要求

### MARINE TECHNOLOGIES, LLC

Marine Technologies, LLC · 1111 Decker Drive · Mandeville, LA 70471 · (985) 951-7771 · sales-us@mtllc.us

Marine Technologies, LLC · Hovlandsveien 44 · 4370 Egersund · Norway · (+47) 51 46 18 66 · sales-norway@mtllc.us

MT – Marine Technologies Pte, Ltd · 17D Tuas Road · Singapore 637817 · (+65) 3106 4070 · sales-singapore@marine-technologies.sg

www.Marine-Technologies.com



## BRIDGE MATE ECDIS产品特点:

- 实时定位和航迹监视
- 高级航线规划和验证功能
- 海图数据升级简便, 可通过e-mail、DVD光盘或者C-Map在线更新等多种方式实现
- 接口齐全, 可连接多种导航设备
- 采用模块化设计, 灵活的模块搭配可适用于新造船和改造船的安装
- 免维护船用电脑
- 19"或23.1"触摸屏显示器, 也可根据客户要求定制尺寸
- 兼容以下电子海图格式:
  - PRIMAR出品的采用S-63数据保护系统加密的S-57第三版ENCs海图(官方电子海图)
  - C-Map出品的CM-93/3和CM-93/2矢量海图
  - 英国ARCS出品的RNCs海图(光栅电子海图)和澳大利亚Hydrographic出品的Seafarer RNC海图。
- 雷达图像叠加功能(需配合MT雷达或加配雷达接口板)
- AIS目标和信息显示
- 直观的菜单系统使操作更为简便, 内置用户手册和在线帮助功能

## BRIDGE MATE ECDIS可选配置

- 航行警报接收机 (NAVTEX) 接口板
- 两翼分显
- 海盗报警系统
- 综合气象预报信息
- 海面交通追踪和提示系统 (TTS) 接口板
- 轨迹控制功能(需搭配MT操舵系统实现)

## BRIDGE MATE ECDIS标准配置

该设备符合以下标准:

- IEC 60945 Ed. 3.0, 海事导航和无线电通讯设备与系统的一般要求
- IEC 61174 Ed. 3.0, ECDIS操作和性能要求
- IMO决议A.817(19), 电子海图显示和信息性能标准
- NMEA 0183 2.30版, 船用电子设备接口标准
- IEC 61162 Ed. 2.0, 海事导航和无线电通讯设备与系统的数字化接口
- AIS接口符合ITU-R M.1371和IEC 61993-2标准