



MARINE TECHNOLOGIES



GREEN TECHNOLOGIES

# MANOEUVRING, CONTROLLING AND POWERING VESSELS







Control, communication and monitoring  
solutions for all types of vessels



Power and energy storage solutions  
for all types of vessels



80+



R&D



Sales



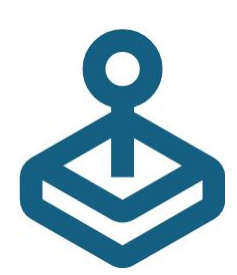
Support



Production



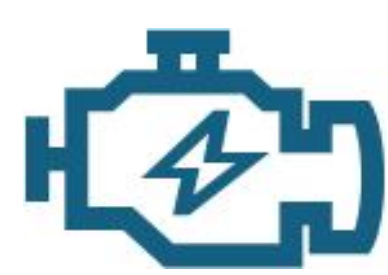
Navigation and  
maneuvering



Vessel Control



Electric Systems



Motors and  
Generators



Energy Efficiency



Battery, charging  
and hybrid  
solutions



Condition  
Monitoring



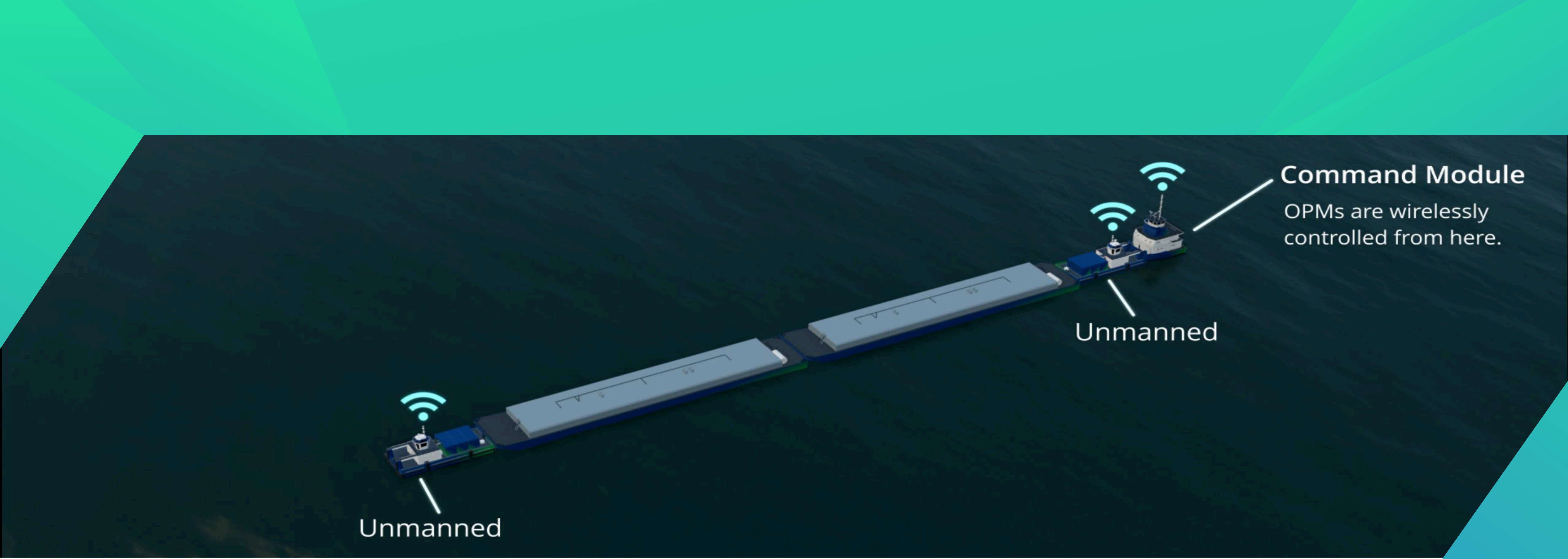
Alarm and  
Monitoring



Vessel  
Communication







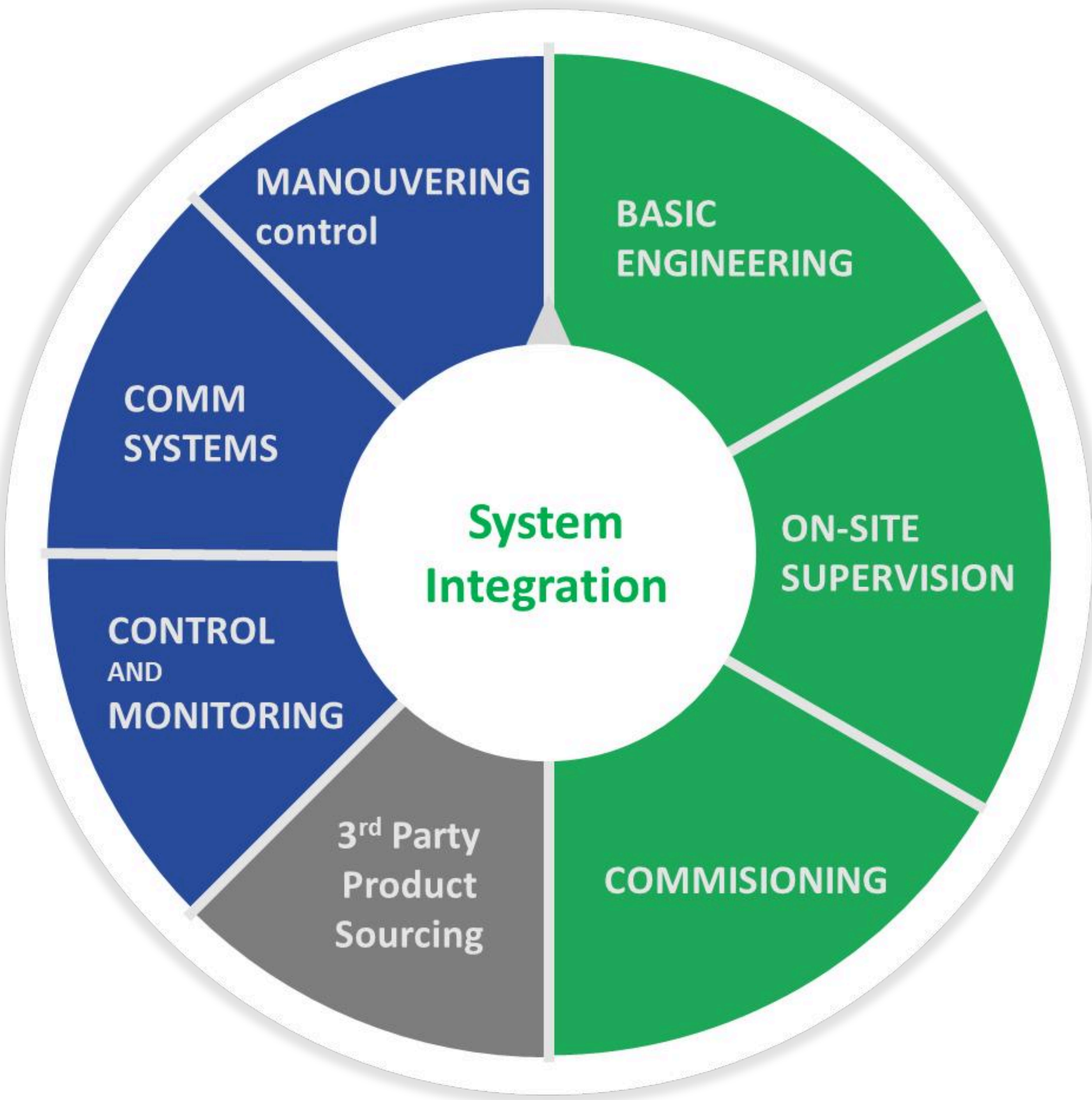
# Technology Installed

Total Customers	Integrated Systems	Hybrid and Fully Electric Vessels	CBM Sensors Retrofitted	Digital Twins
1000+	600+	30+	6000+	200+

- CUSTOMER FOCUS**
- Follow market trends
  - Market knowhow

- PRODUCTION**
- In-house production of several products

- GLOBAL LIFE CYCLE SERVICE**
- Spare parts
  - Crew Training
  - Global services



- VESSEL BASICS ELECTRICAL SYSTEM DESIGN**
- Basic systems architecture
  - Functional specification
  - Technical specification

- ON-SITE**
- Supervision
  - Commissioning
  - Testing

- COMMISSIONING**
- Assure installation
  - Compliance testing
  - Crew training





# Marine Technologies LLC

## Complete Vessel Control Solutions

We deliver more than DP—offering full vessel control, maneuvering, and navigation systems for all vessel types


## Smart Monitoring & Maintenance

Our technology enables real-time monitoring, predictive maintenance, emissions tracking, and fleet optimization using machine learning and digital twins.

## Built for the Future


With a strong R&D focus, we lead innovation in offshore wind, autonomy, and smart vessel operations—driving safer, greener, and more efficient maritime solutions.

Dynamic Positioning




Lever and Joystick  
PKS  
DP0  
DP1  
DP2  
DP3

Integrated Bridge System




ECDIS  
RADAR  
Conning  
Bridge Alarm Management System  
Heading Control System  
Track Pilot

Remote Control & Autonomy




Assisted Operations  
Remote Control  
Autonomy

Thruster Control System




Tailored systems to each vessel  
Integrates to all makes of thrusters

Smart Ship Solutions




COBRAS  
CBM  
Vibration Tracking  
Fuel  
Data Hub  
CCTV etc.

Hardware




Computers  
Panel PC's  
Monitor's  
MRU  
I/O modules  
Sensors  
Communication

Automation



Alarm Monitoring System  
Power Management System

Power Systems



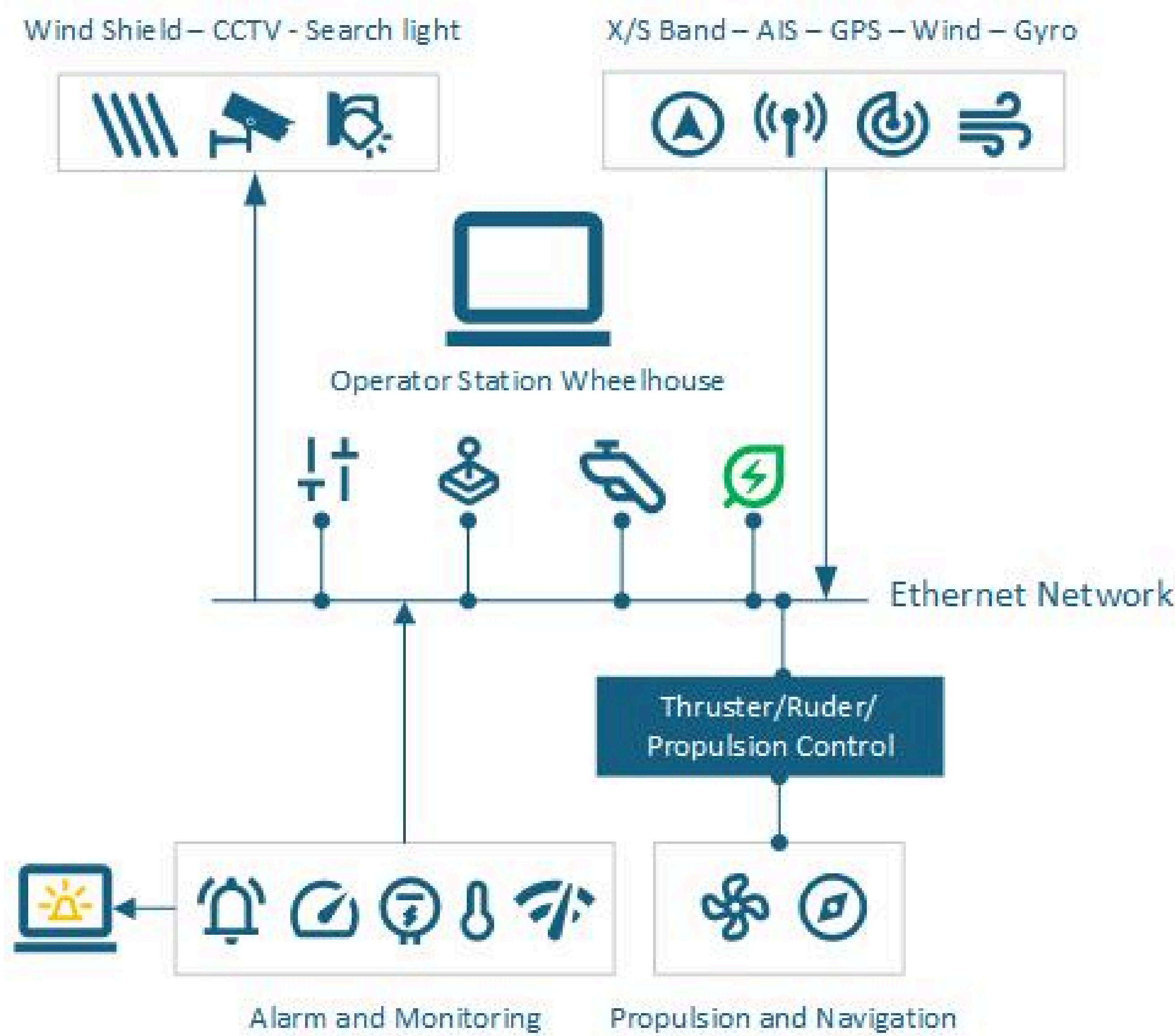
Variable Frequency Batteries  
Energy Storage  
Charging





# Vessel Maneuvering and Integrated Bridge

- Ethernet infrastructure (less cables)
- Competitive pricing and low lifetime cost
- Reliable and predictable product life cycle
- Less spare parts
- Service friendly
- Remote support



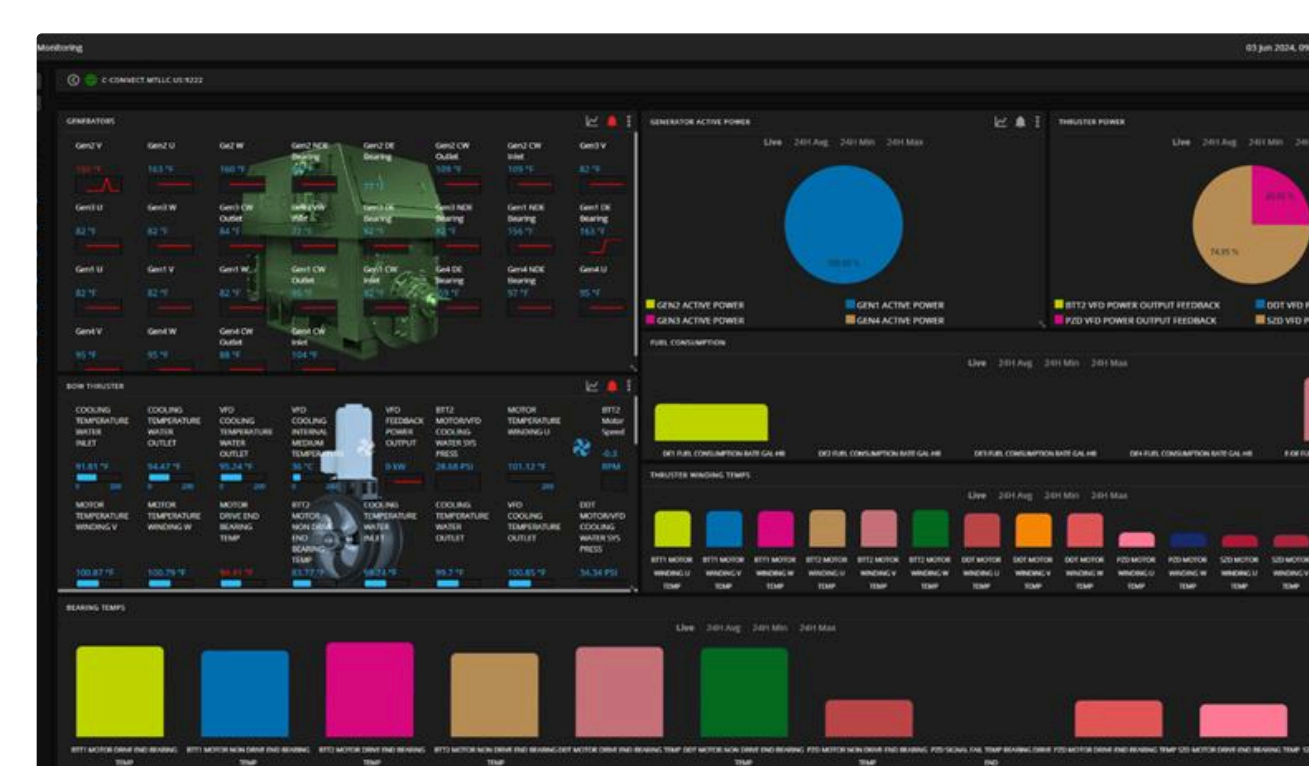
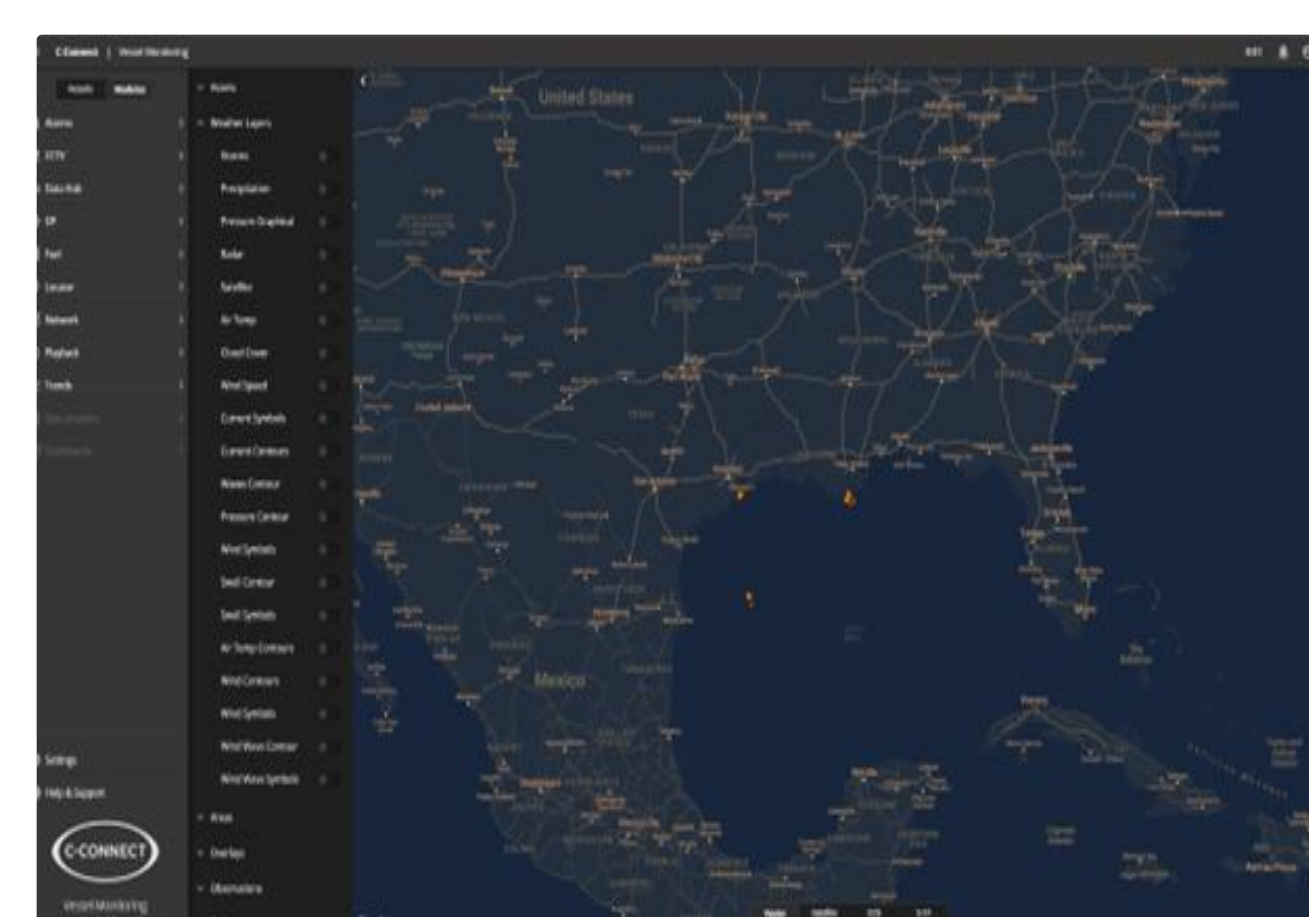
Choose sitting or standing while operating vessel





# Vessel Monitoring

- Fuel monitoring
- Condition monitoring sensors (vibration, oil, engine bearings)
- Vessel locator and tracking
- AI and Machine Learning
- Vessel performance
- CCTV (deck camera and FLIR)
- Vessel playback
- Data trending
- Vessel systems
- Alarms and events
- Dashboard builder
- Reporting







# What Can Be Detected

## Vessel Performance Issues Impacting Operational Costs

Identification of conditions that lead to increased fuel consumption, reduced equipment life, or unplanned downtime—directly increasing operational expenses.

### Root Cause Analysis

Identification of the underlying causes behind failures and performance deviations.

### Mechanical Failures & Defects

Detection of wear, fatigue, misalignment, imbalance, and mechanical breakdowns.

### Electrical System Failures

Identification of faults such as short circuits, overloads, insulation failures, and signal interruptions.

### Electronic Performance Issues

Malfunctions or degraded performance in sensors, control boards, or digital systems.

## Human Errors

Operational mistakes, mishandling, or misconfigurations that impact system performance.

## Component-Level Diagnostics & Life Prediction

Detailed analysis of specific parts with predictive insights into remaining useful life.

## Operational Inefficiencies

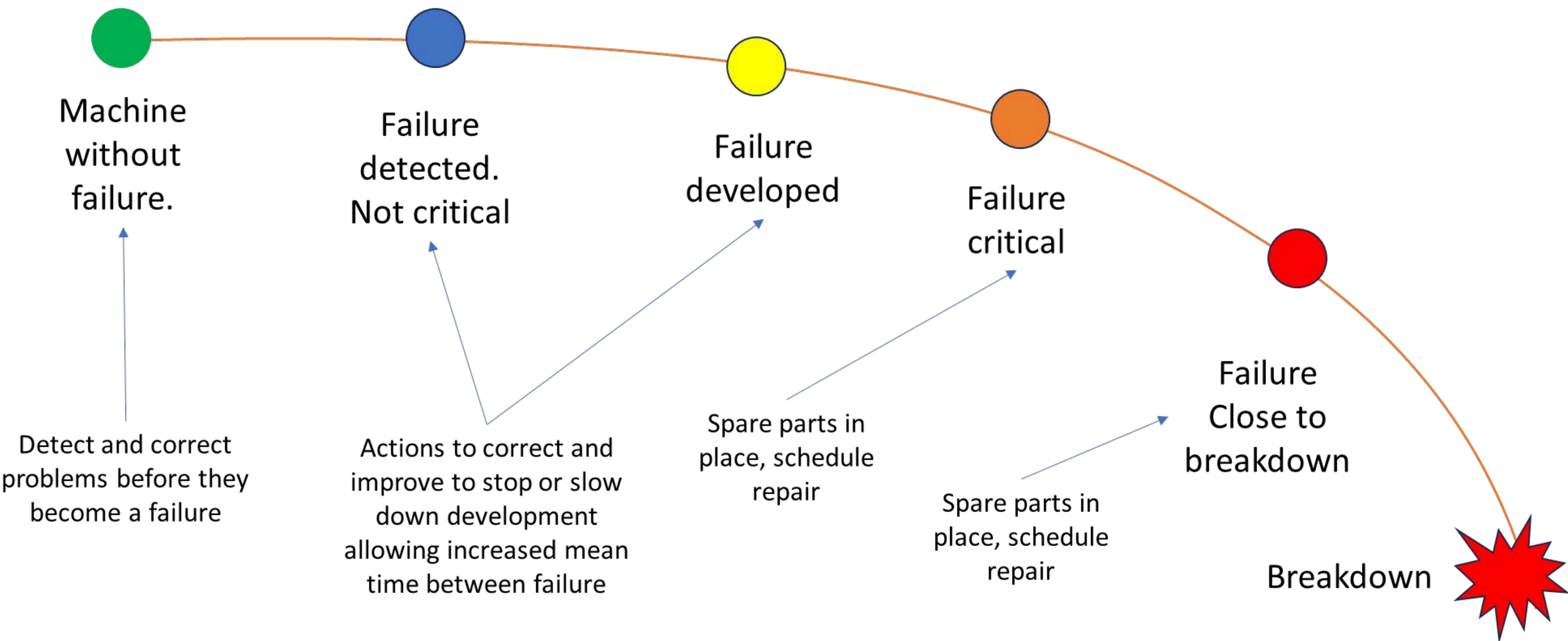
Detection of non-optimal operating conditions such as load imbalances, inefficient routing, or poor utilization.

## Excessive Energy Consumption

Identification of abnormal energy usage due to system inefficiencies or degraded equipment.

## Incorrect Maintenance or Procedures

Detection of unnecessary, delayed, or improperly executed maintenance actions.







# Green Technologies LLC

A power, energy and control system integrator

## Systems and Solutions

As a marine system integrator for any vessel, we play a crucial role in ensuring the seamless integration and optimization of maritime power and electric systems.

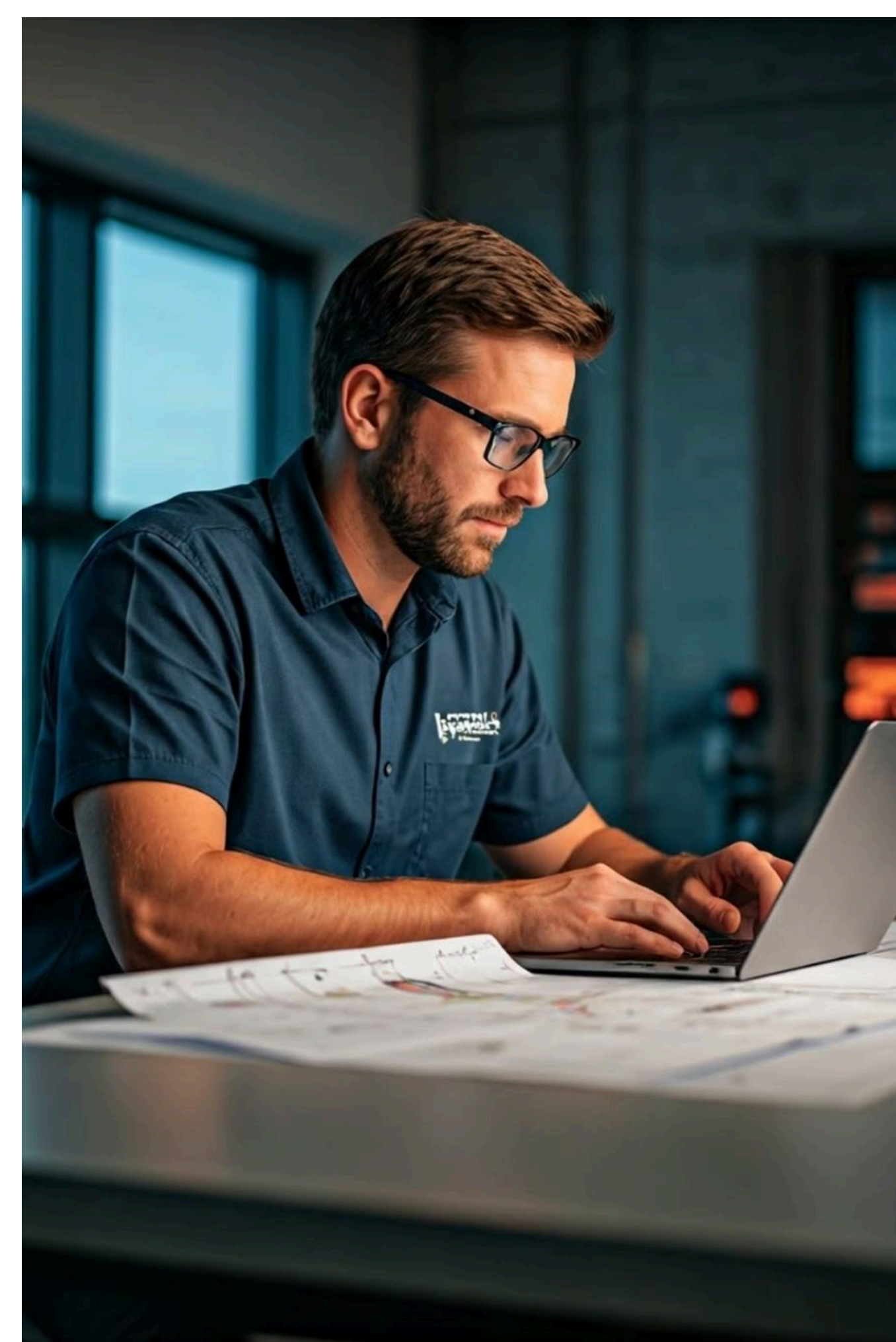
## Project Management

Responsible for basic design, supervision, and managing the integration of the power systems we ensure efficient and reliable vessel operations.

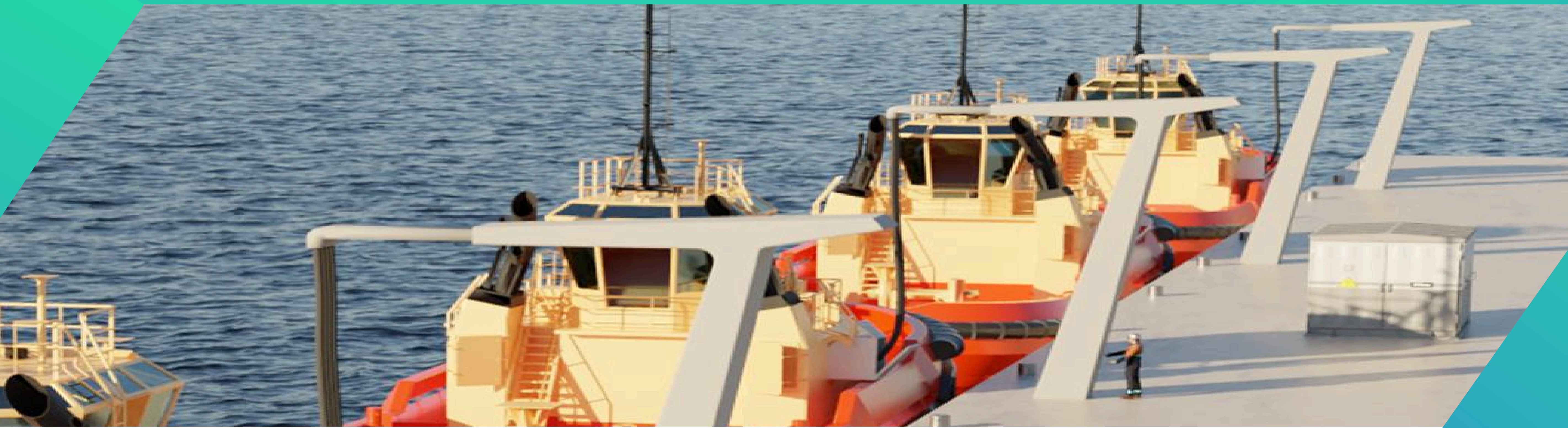
## Experience and Efficiency

Our extensive expertise in managing the intricate web of components, subsystems, and communication protocols is essential for delivering reliable, efficient, and sustainable marine operations.

- Basic Electrical System Design and Integration
- Alternative power and power storage
- Energy optimization of existing vessel
- Switchboards and Drives
- Motors and Generators
- Energy Management and Efficiency
- Fault Management and Safety
- Regulatory Compliance
- Regulatory Compliance
- Control and Monitoring







# Growing Demand for Efficiency and Sustainability Power Solutions

## Efficiency

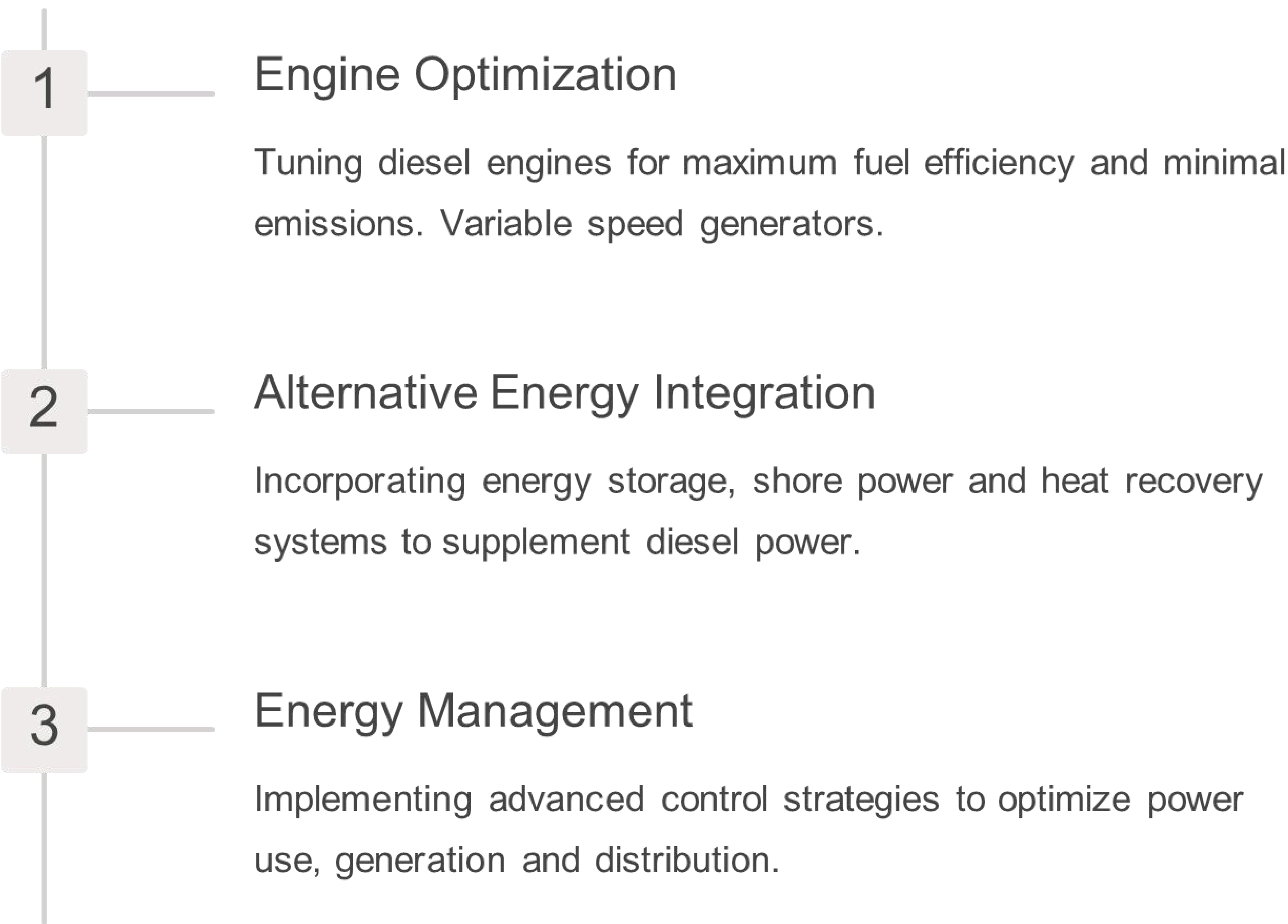
Operators are seeking power systems that maximize fuel efficiency and minimize emissions to reduce operating costs and environmental impact.

## Sustainability

Alternative fuels, variable speed generators, energy storage, heat recovery and shore power are gaining traction as viable options to power offshore vessels in an eco-friendly manner.

## Regulatory Compliance

Stricter environmental regulations are driving the need for more sustainable power solutions to meet emissions targets and ensure regulatory compliance.







# Advancements in Hybrid and Electric Propulsion Systems

1

## Hybrid Systems

Combining traditional diesel engines with variable speed and batteries in hybrid systems offer improved efficiency, reduced emissions, and enhanced operational flexibility.

2

## All-Electric Vessels

Fully electric propulsion systems, powered by batteries (or fuel cells) and shore power, are becoming a viable option for shorter-range offshore operations.

3

## Integrated Solutions

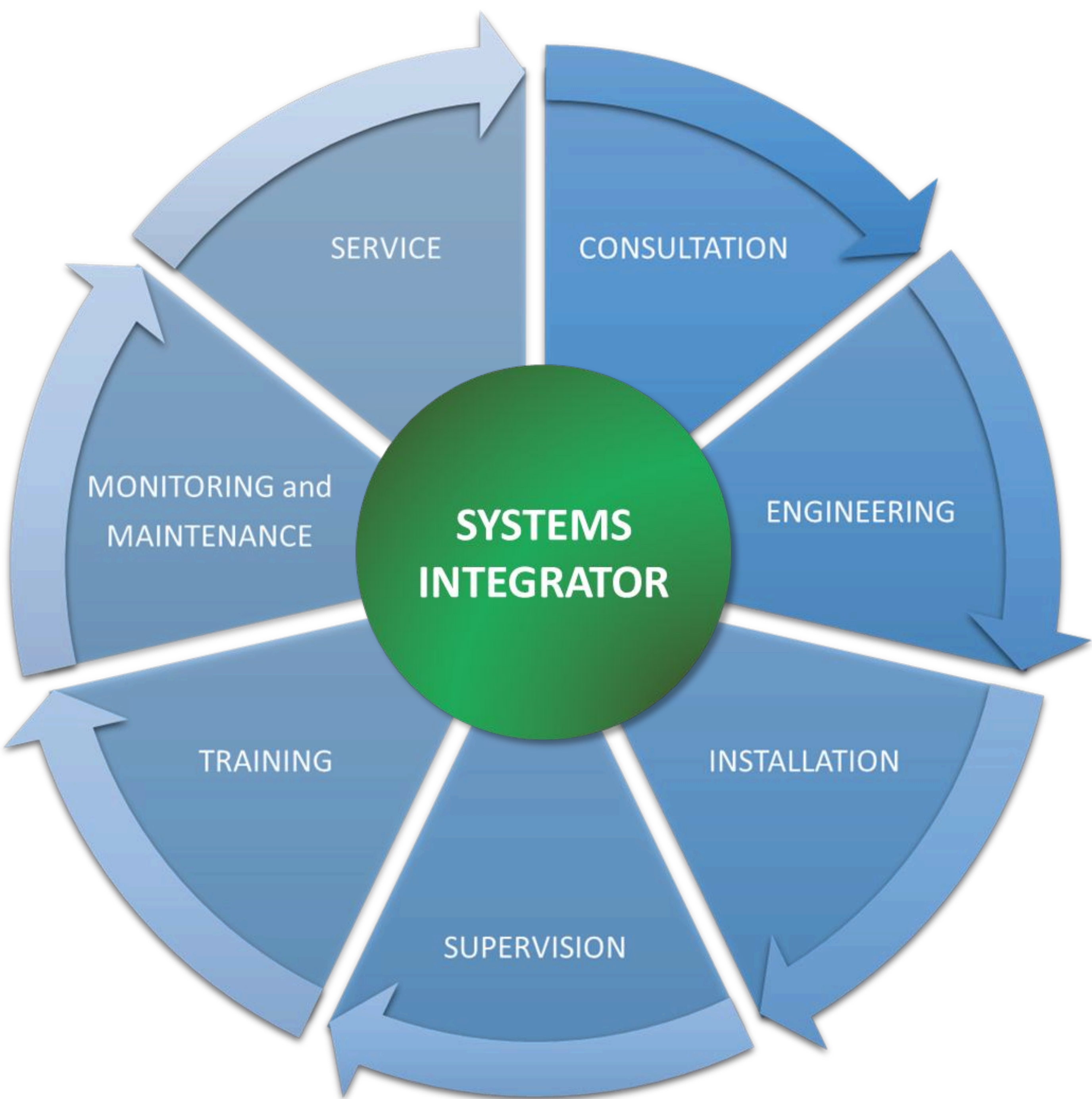
Intelligent power and energy management systems are integrating energy storage, and advanced controls for optimal performance.





# System Integrator Life-Cycle

The Systems Integrator Plays A Crucial Role In The Entire Life Cycle Of A System, From Initial Planning To Ongoing Support



**Consultation:** Initial Assessment Of Needs And Requirements

**Engineering:** Design And Development Of The System Solution

**Installation:** Setup And Commissioning Of The System

**Supervision:** Monitoring And Management During Installation

**Training:** Educate And Train The End-User (Crew)

**Monitoring:** Track System Performance, Detect Anomalies

**Maintenance:** Routine Upkeep And Troubleshooting

**Service:** Proactive Support And Assistance



# Contact Us

## Marine Technologies



Asbjørn Rønneberg  
Manager Smart Ship Solutions  
[asbjorn.ronneberg@mtllc.us](mailto:asbjorn.ronneberg@mtllc.us)

## Green Technologies



Arne Ove Rødstøl  
Managing Director  
[arne@gta.green](mailto:arne@gta.green)

## For other inquiries

### US Contact

Marine Technologies, LLC  
1111 Decker Drive  
Mandeville, LA 70471

Office: 985-951-7771

[contact-us@mtllc.us](mailto:contact-us@mtllc.us)  
[sales-america@mtllc.us](mailto:sales-america@mtllc.us)

### Norway Contact

Marine Technologies, LLC  
Langholmveien 6  
4373 Egersund  
Norway

Switchboard: +47 51 46 18 66

[contact-norway@mtllc.us](mailto:contact-norway@mtllc.us)  
[sales-europe@mtllc.us](mailto:sales-europe@mtllc.us)

